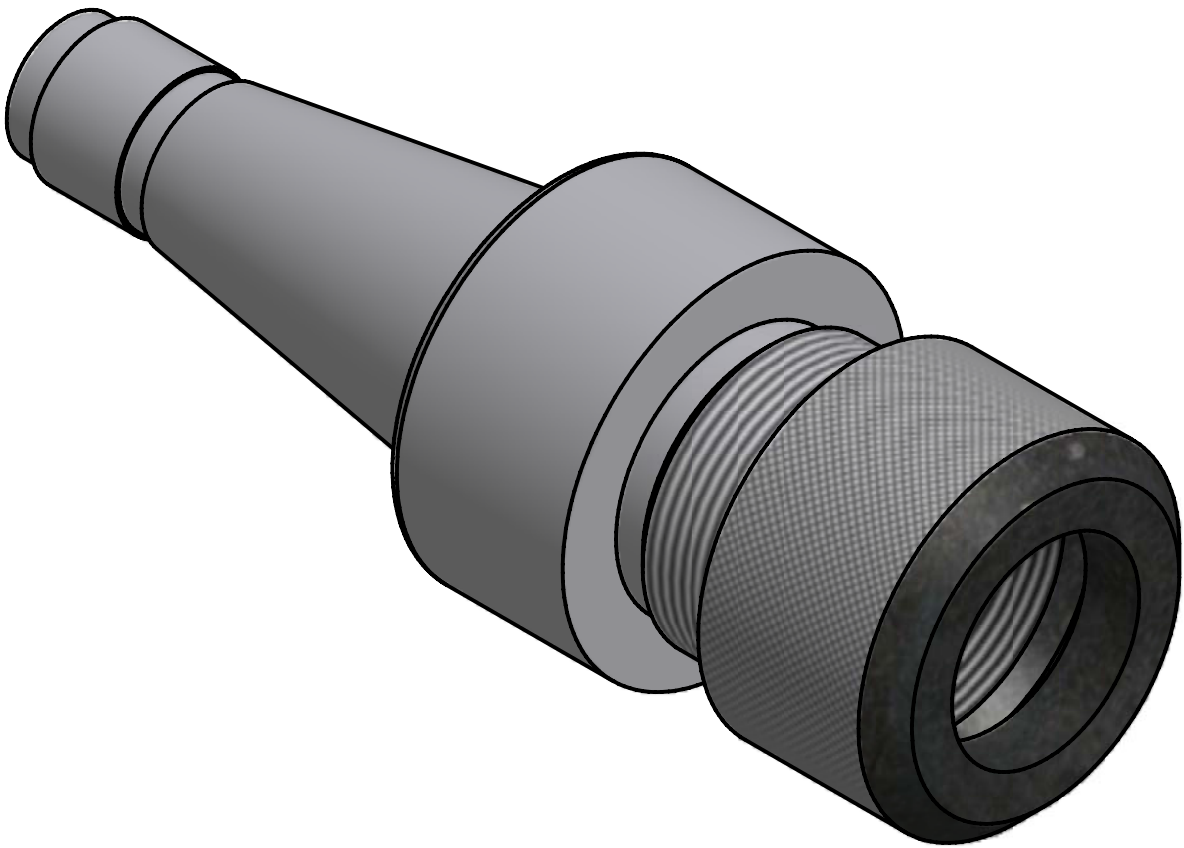


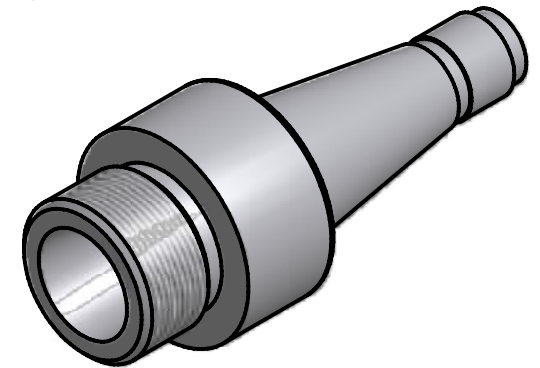
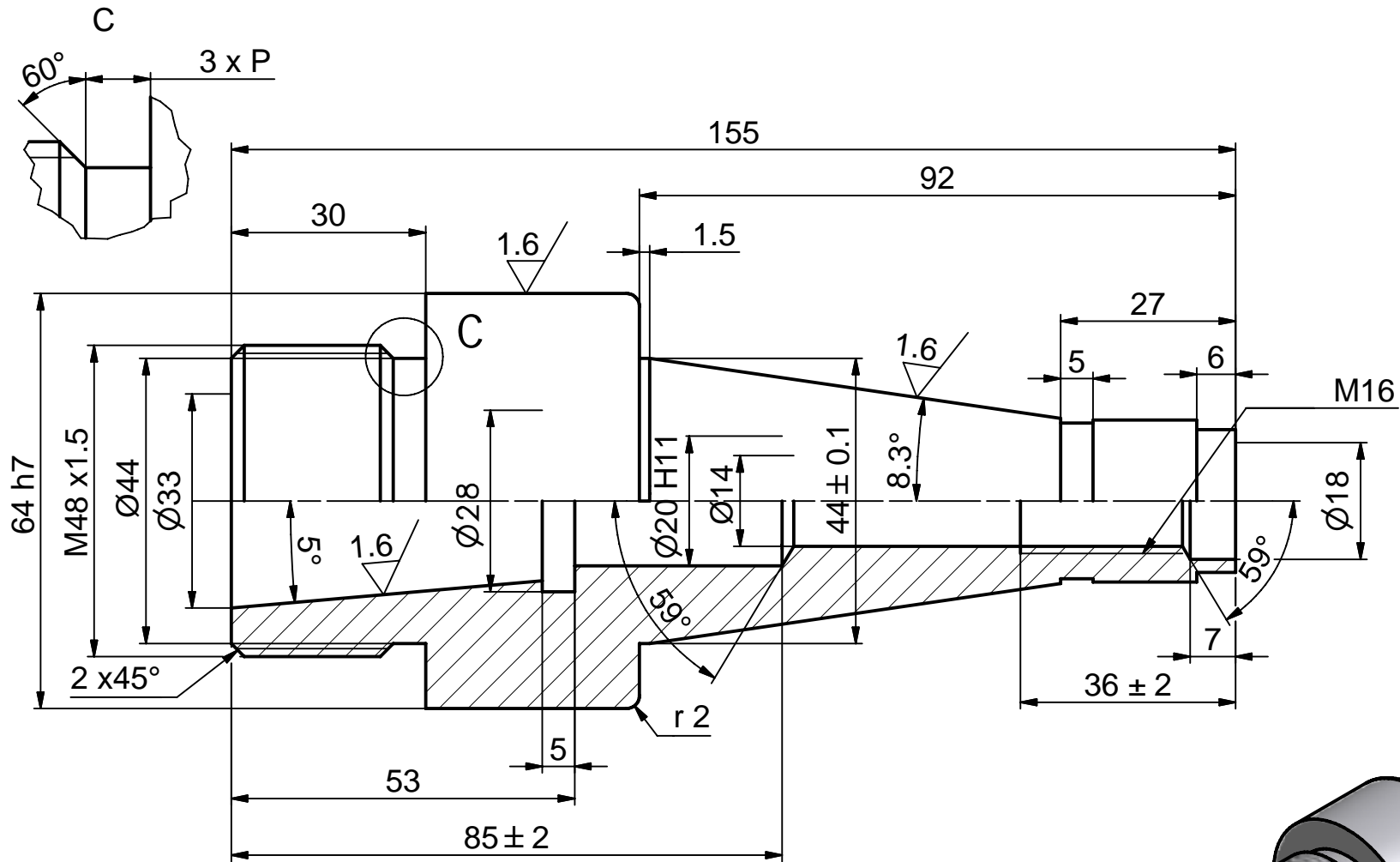
**Industrieteknik**

**Assistent.**

**Svendeprøve**



**Opgave 1**

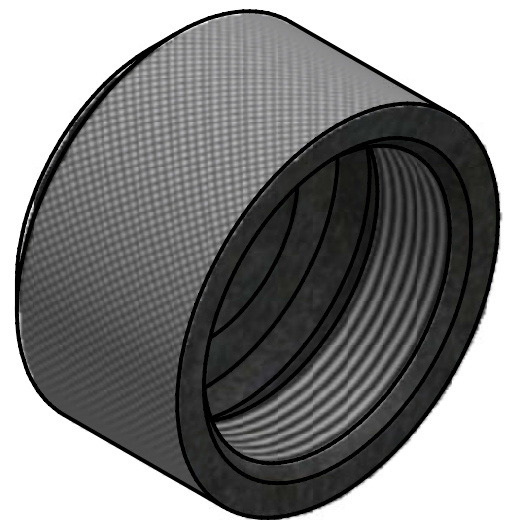
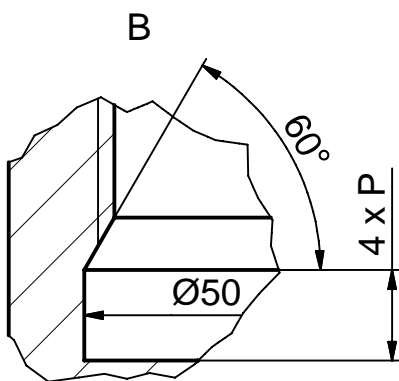
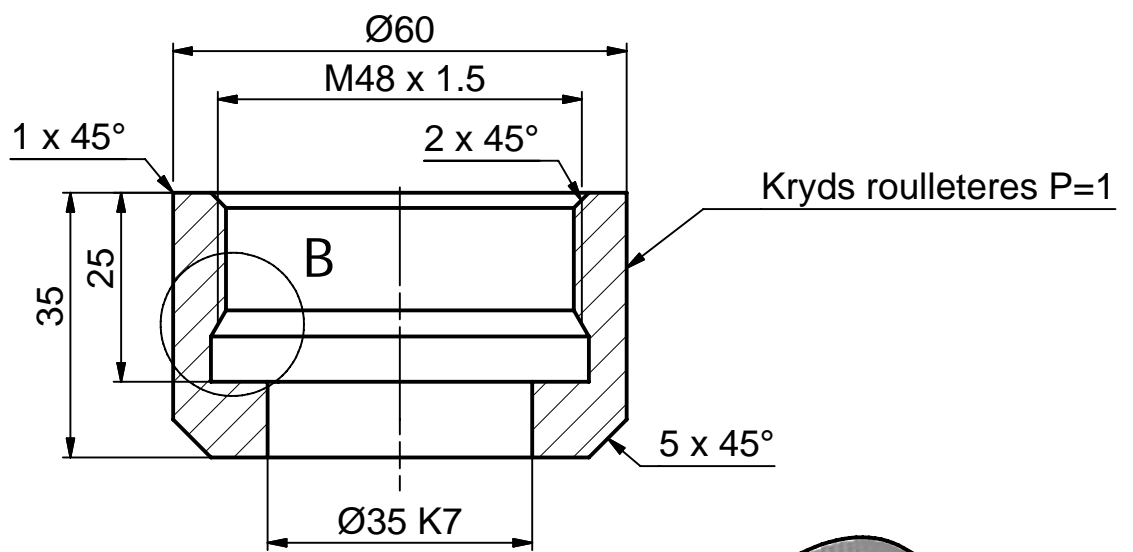
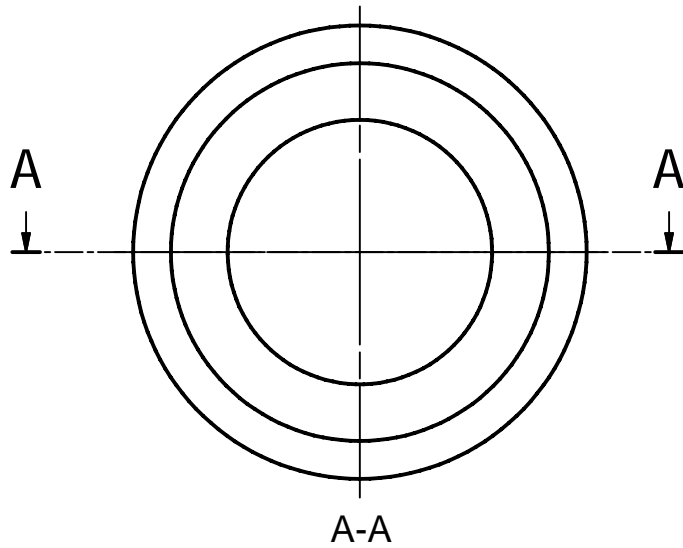


Ikke tolerancesatte mål DS/ISO 2764 - m

Generel overflade Ra  $\sqrt{3.2}$  ( $\sqrt{1.6}$ )

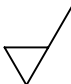
STYKLISTE


Pos nr	Antal	Benævnelse	Materiale	Dimension	Tegnings nr.
1	1	Spindel	FE 510 B.	ø80 x 160	Opgave DR 1_1
<b>OPGAVE 1</b>					Konstr.: EUCsyd/pd
Svendeprøve INDUSTRI ass.					Filnavn.: EUCsyd_1_1
					Tegnings nr.: Opgave DR 1_1



Skarpe kanter brydes

Ikke Tolerancesatte mål DS/ISO 2768 - 1m

Overflade Ruhed  Ra 3.2

STYKLISTE					
Pos nr	Antal	Benævnelse	Materiale	Dimension	Tegnings nr.
1	1	Opgave 1_2	Fe 510 B	Ø65 x ?	Opgave DR 1_2
				OMLØBER	
				Svendeprøve INDUSTRI ass.	
				Konstr.:	EUCsyd/pd
				Filnavn.:	EUCsyd
				Tegnings nr.:	Opgave DR 1_2